

Axial fans, VA series

Axial fans fall into the following categories:
VA 9/2, VA 12/2, VA 12/2K, VA 14/2, VA 16/2.

Designed for:

- cooling of electronic control panels;
- ventilation of electrical panels;
- installation in devices in electronics, appliance construction and automation;
- cooling of welding machines and plasm cutting machines;
- installation in cooling and ventilation systems and air-conditioning devices;
- installation in household air heaters and heat exchangers.

All fans of this type have a built-in single-phase electric motors with shielded poles and a short-circuited rotor with double capsulated ball bearings. The fan is square in shape with internally located fins to which the stator is attached.

All types of ventilators are manufactured in varieties which are suitable for fixing to apertures and air conduits with $\Phi 90$, $\Phi 100$, $\Phi 120$, $\Phi 135$ and $\Phi 150$.

The supply voltage is 220V, 115V, 36V and 24V and the rated frequency is 50Hz and 60Hz.

Isolation class: "H" - 180 degrees Celsius or "L" - 200 degrees Celsius.

Protection degree: IP 32.

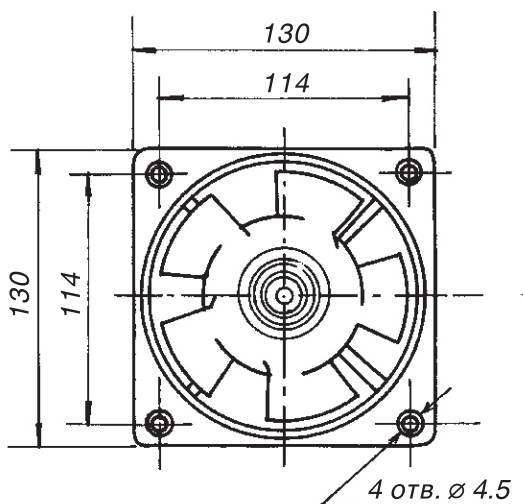
Operating conditions:

The fans are designed to operate under normal climatic conditions as the ambient temperature can vary from (-5) degrees Celsius up to (+60) degrees Celsius and the relative humidity at 30 degrees Celsius from 40% to 98%.

Upon clients' request the fans can be manufactured to operate at higher temperatures, in tropical or coastal climatic zones.



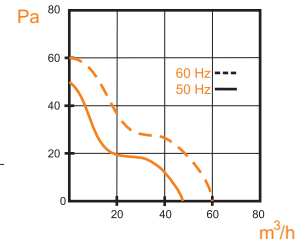
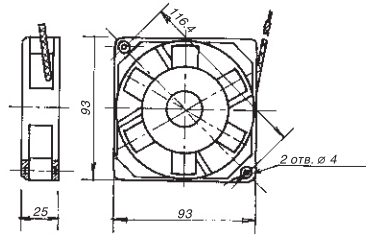
The double capsulated ball bearings guarantee 30,000 hours of flawless operation.



Technical characteristic

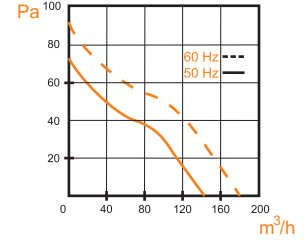
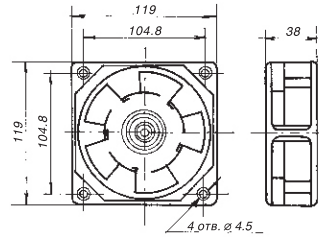
VA 9/2

Supply voltage	Rotational speed	Maximum flow rate	Maximum static pressure	For maximum flow rate		Weight
				Consumed power	Consumed current	
Hz / V	min	m ³ /h	Pa	W	A	kg
50 / 220	2500	60	50	16	0,095	0,4
50 / 115	2500	60	50	15	0,178	0,4
60 / 220	3000	70	60	14	0,090	0,4



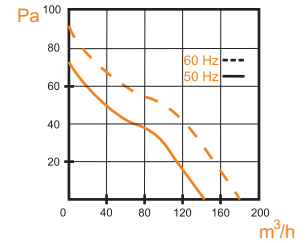
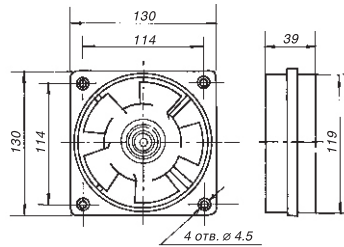
VA 12/2

Supply voltage	Rotational speed	Maximum flow rate	Maximum static pressure	For maximum flow rate		Weight
				Consumed power	Consumed current	
Hz / V	min	m ³ /h	Pa	W	A	kg
50 / 220	2650	150	75	18	0,125	0,8
50 / 115	2650	150	75	17	0,234	0,8
60 / 220	3200	180	90	16	0,115	0,8



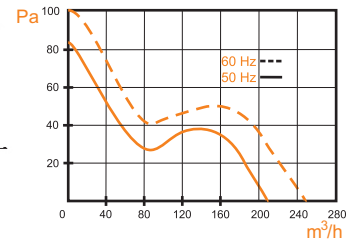
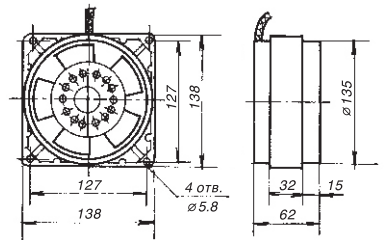
VA 12/2K

Supply voltage	Rotational speed	Maximum flow rate	Maximum static pressure	For maximum flow rate		Weight
				Consumed power	Consumed current	
Hz / V	min	m ³ /h	Pa	W	A	kg
50 / 220	2650	150	75	18	0,125	0,525
50 / 115	2650	150	75	17	0,234	0,525
60 / 220	3200	180	90	16	0,115	0,525



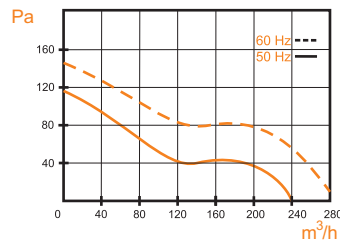
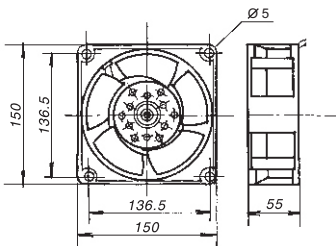
VA 14/2

Supply voltage	Rotational speed	Maximum flow rate	Maximum static pressure	For maximum flow rate		Weight
				Consumed power	Consumed current	
Hz / V	min	m ³ /h	Pa	W	A	kg
50 / 220	2650	205	85	42	0,34	1,4
50 / 115	2650	205	85	42	0,68	1,4
60 / 220	3200	250	98	38	0,32	1,4



VA 16/2

Supply voltage	Rotational speed	Maximum flow rate	Maximum static pressure	For maximum flow rate		Weight
				Consumed power	Consumed current	
Hz / V	min	m ³ /h	Pa	W	A	kg
50 / 220	2650	240	110	46	0,385	1,2
50 / 115	2650	240	110	45	0,721	1,2
60 / 220	3200	290	130	40	0,385	1,2



Contacts

Factory
3 Malak Iskar Str.,
2180 Etropole - Bulgaria
fax: (+ 359 720) 36 21

Sales:
mobile: (+ 359 89) 9919 959,
E-mail: laptop@mmotors-bg.com

web: www.mmotors.bg



“АЕЦ КОЗЛОДУЙ” ЕАД

Тел: 0973 / 7 21 00, 7 28 30; Факс: 0973 / 23 39
e-mail: info@kznpp.org web: www.kznpp.org

РЕФЕРЕНЦИЯ

ЗА ДЕЙНОСТТА НА “ММОТОРС” АД ГР. ЕТРОПОЛЕ

“АЕЦ Козлодуй” ЕАД издава настоящата референция на фирма “ММОТОРС” АД гр. Етрополе в уверение на това, че фирмата е наш добър партньор и доставчик.

“АЕЦ Козлодуй” ЕАД има отлични делови контакти с фирма “ММОТОРС” АД гр. Етрополе през последните десет години. За време на съвместната ни работа, при изпълнение на възложените поръчки фирмата проявява точност, коректност и професионализъм. Винаги е изпълнявала изискванията за необходимото качество и в срок.

Фирма “ММОТОРС” АД гр. Етрополе е единствен производител в Р България на вентилатори тип ВА 12/2К, чиито технически характеристики и качество отговарят на изискванията за приложение в АЕЦ.

“АЕЦ Козлодуй” ЕАД препоръчва фирма “ММОТОРС” АД гр. Етрополе като изключително лоялен и коректен партньор.

Настоящата референция се издава на “ММОТОРС” АД гр. Етрополе за да послужи за участия в конкурси и търгове, а също и за без последващи ангажименти от наша страна.

гр. Козлодуй
28.04.2005г.

Директор Производство: 

Кирил Николов
“АЕЦ КОЗЛОДУЙ” ЕАД
гр. Козлодуй