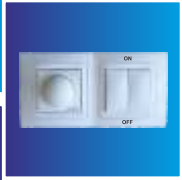


100m³/h

M Motors JSC

long life systems



03"

Sleep

70-75%

90%

03

1.

2.

3.

4.

5.

6.

7.

8.

9.

10.

11.

(

)

11.1.
2650 min⁻¹

11.2.



900min⁻¹
30m³/h 100m³/h.

25

	Hz/V	m ³ /h	W	W	min ⁻¹	IP	Kg
O3	50/230	100	18	420	2650	44	2,7

- 2 (

) 2 (

420W -

?t (

) 40° C

100m³/h.

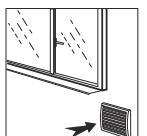
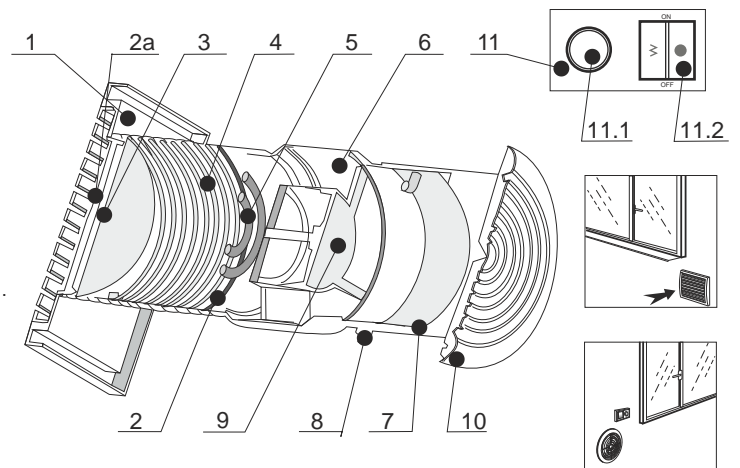
23° (

)

30m³/h -

100m³/h -

70% - 75%





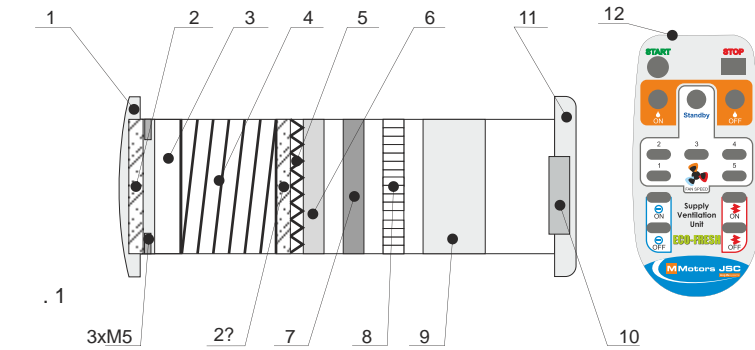
05"

IFP

- 2009



No1813

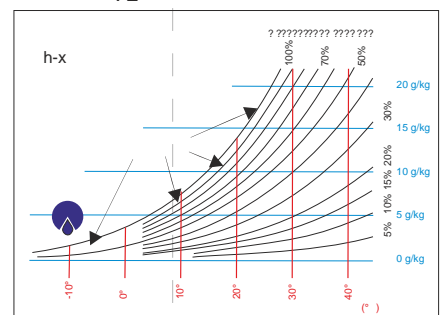
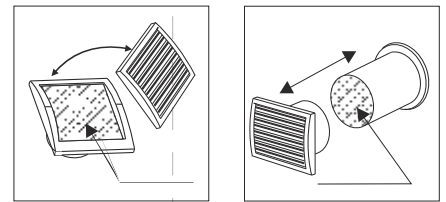
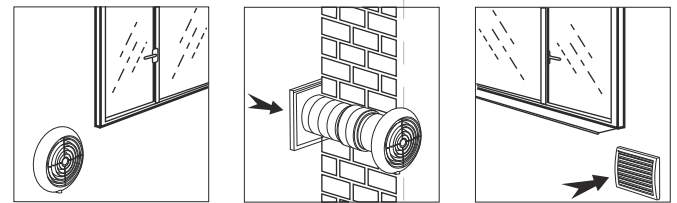


1. 3xM5
2. ?
3. 7
4. 8
5. 9
6. 10
7. 11
8. 12

1. 420W -
2. 23° C. ?t (
3. 35° C
4. 120m³/h.
5. -12°
6. 23°
7. 17°
8. 30m³/h
9. 120m³/h -
10. 70-75%.
11. (. 3):
12. (. 3):

Standby
70-75%.
3. 5
70-75%.
17°
32
17

	Hz/V	m³/h	W	W	min ⁻¹	IP	Kg
05	50/230	120	46	420	2650	44	3,1



START -
STOP -
Standby -
70-75%
70-75% -
70-75%.
10
5
ON -
OFF -
FAN SPEED -
30m³/h
120m³/h

